

LAWN MANOR
— ACADEMY —

NEWSLETTER

Inspiring and Creating Futures For All





LAWN MANOR
—ACADEMY—

NEWSLETTER

29th June 2023

Inspiring and Creating Futures For All



 FITZROY
—HOUSE—

Dates for your diary:

30th June – Year 11 Prom

**5th July – school closed
due to industrial action**

6th July – PD Day 6

**6th July – Expressive Arts
Concert @ New College**

**7th July – School closed
due to industrial action**

**17th – 20th July
Enrichment Week**

**21st July – Last Day of
Term 6**

 PLEYDELL
—HOUSE—

 GODDARD
—HOUSE—

Welcome to our latest edition of our Newsletter. The end of term is fast approaching and there is a lot going on each day in the school. Lots being captured here in our Newsletter but do keep an eye on our social media channels too!

Industrial Action

I wrote to all parents earlier in the week regarding the industrial action that is planned by the NEU on Wed 5th and Fri 7th July. Unfortunately, due to expected staffing levels we will be unable to open the school on these days. Pupils with SEND (EHCP) needs and other vulnerabilities will be invited into school to work centrally on both days. There are full details in the letter.

New School Day

I also wrote to all parents earlier in the week regarding the change to our school day. From 1st September we will have the later finish of 3.20 daily. Again, full details are within the letter that you will have received via email.

Celebration of Welcomes

Last Wednesday, we hosted a fantastic evening that celebrated the cultural diversity in our school. The event was well attended, not only by parents but also representatives from SBC and City of Sanctuary. LMA is working hard to gain 'School of Sanctuary' status and this event really did showcase why we should receive this. We were treated to food from all around the world that had kindly been donated and entertained by a Samba band, Indian music and dance, an Italian aria and some really moving poetry read in numerous native languages by our young people. We also have a number of pupils who are Welcome Ambassadors to help new pupils settle into our school and they were all part of this event. This week we have also had pupils coming to school in cultural dress from around the world and this has been a fantastic way to celebrate all of the diversity that we have in our school.

Have a lovely weekend,

Sandra Muir
Headteacher



Headteacher Commendations

Mrs Muir presented several pupils with Headteacher Commendations. These pupils were nominated for their fantastic art work for the King's Coronation!





On Thursday 29th June our pupils and staff had the opportunity to come dressed in their traditional, cultural dress.



It's PRIDE month in the Library



Dear All

It's June and we are celebrating **PRIDE** month.

This is a month dedicated to celebrating LGBTQ+ communities all around the World. Pride Month is about acceptance and equality, celebrating the work of LGBTQ+ people in education, in its history and to raise awareness of issues affecting the LGBTQ+ community.

Pride is all about being proud of who you are.

Come and visit the Library and see the new, very colourful displays and most importantly the wonderful new books available to loan out. (These all have a new rainbow logo on them)

Free themed bookmarks.

Looking forward to seeing you all.

Mrs Reynolds
Library Officer.





On Wednesday 21st June, we hosted the Celebration of Welcomes event, where pupils and their families spent the evening at the school showcasing the different cultural identities and nationalities that make up Lawn Manor Academy. Attendees were wowed by a programme of music, dance, poetry and presentations accompanied by snacks from around the world. The evening was a joint effort by staff and families, with many coming in traditional dress. Swindon Schools of Sanctuary, a local charity, who school the works with closely, helped to run the event.



YOU ARE INVITED TO OUR FIRST
GCSE
Graphics
Exhibition

SHOWCASING ALL THE HARD WORK
CREATED BY OUR GCSE STUDENTS.

In 3W5 Thursday 6th July 2023 4pm-6pm

Lawn Manor Academy

Falmouth Grove

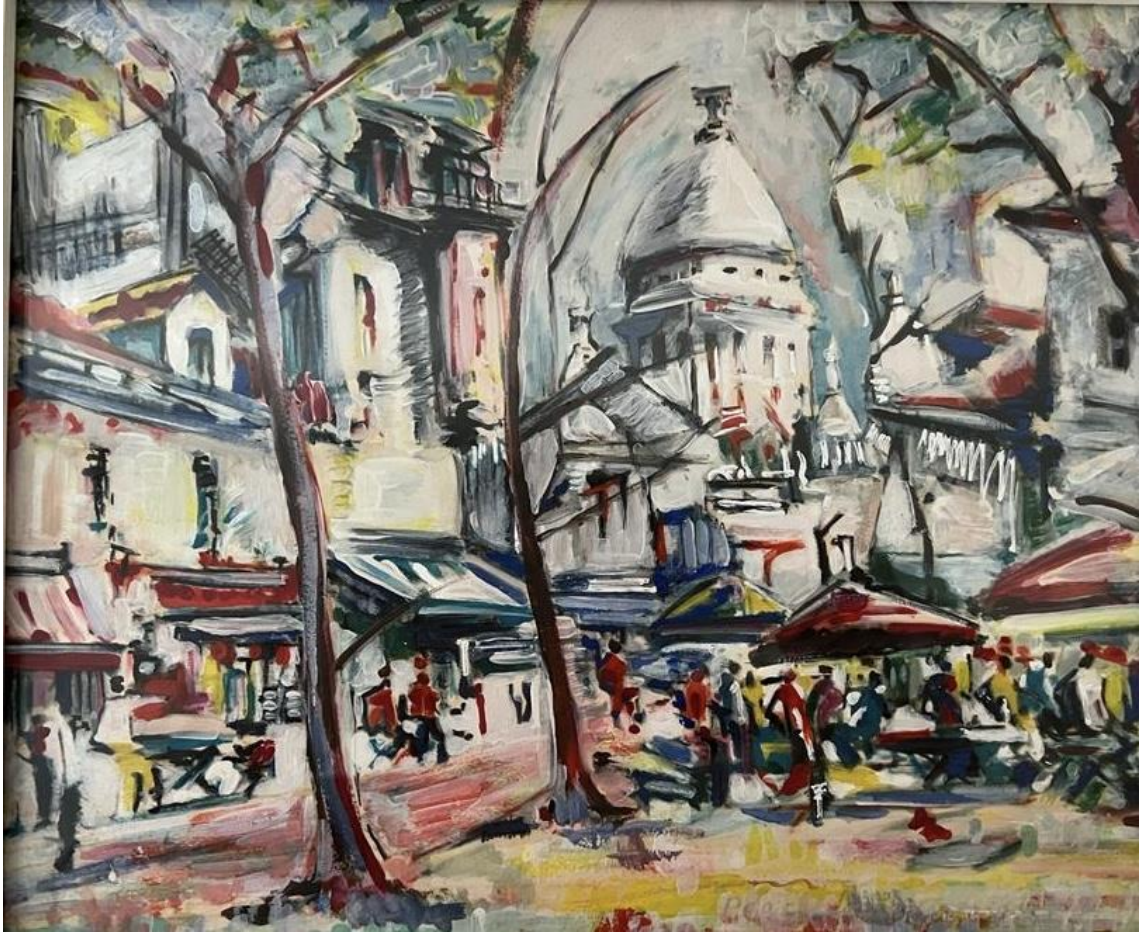
Swindon

SN3 1ER

RSVP:

emills@lma.ascendlearningtrust.org.uk

01793 487286



YOU ARE INVITED TO A CELEBRATION OF GCSE ART WORK

The Art Department requests the pleasure of your
company at

Lawn Manor Academy
Falmouth Grove, Swindon SN3 1ER

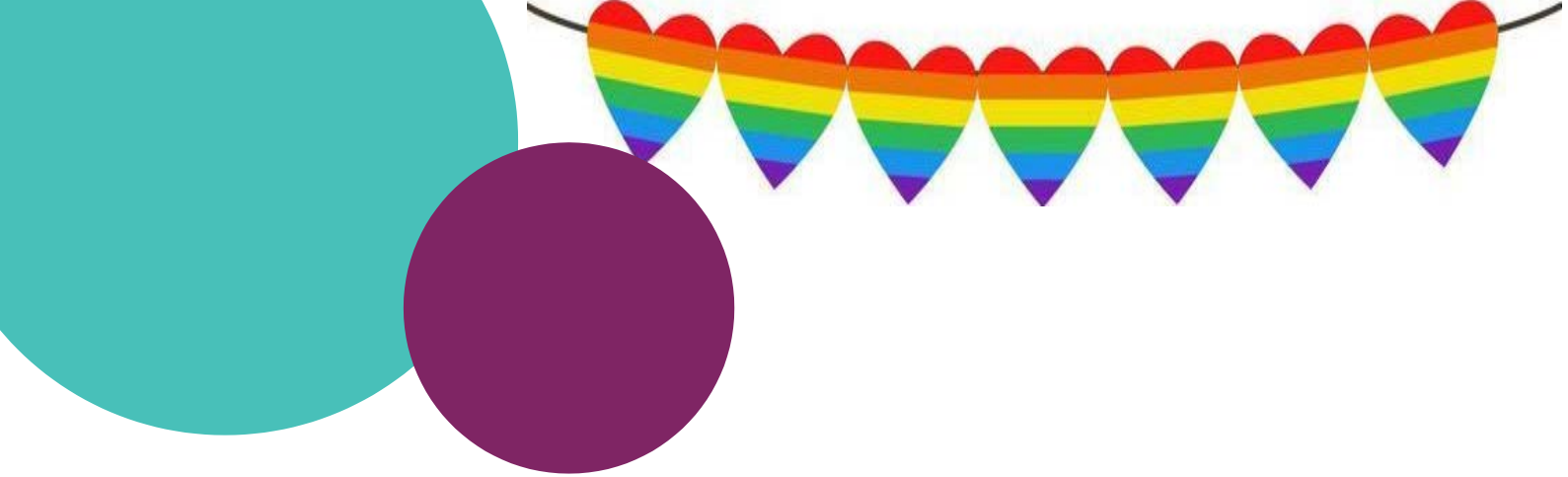
Thursday 6th July 2023 4pm-6pm

RSVP

Caireen Young

Email: cyoung@lma.ascendlearningtrust.org.uk

Tel: 01793 487286



Lawn Manor Academy presents!
Expressive Arts Music and dance
Concert 2023!

When: 6th July
Where: New College
Time: 6.30pm
Tickets: £3

Tickets available from student reception





THE RSPCA YOUNG PHOTOGRAPHER AWARDS 2023

WIN

- ▶ TROPHIES
- ▶ AMAZON VOUCHERS
- ▶ AN EPIC TRIP!

If you're 18 or under, an animal lover, and you can take great photos, this is the competition for you!

Send us your animal images by **15 August 2023**.

Finalists are invited to our Tower of London awards ceremony with TV's Chris Packham.



Hope Skidmore - winner of 12-15 Mobile Phone and Devices category

ENTER NOW!



FOR MORE INFO:
rspca.org.uk/ypa



GODDARD
HOUSE



FITZROY
HOUSE



PLEYDELL
HOUSE



ATTENDANCE

Why We Should Attend School

- Regular school attendance is an important part of giving children the best possible start in life.
- The aim should **be to attend 100% of the time**.
- Pupils who miss school frequently can fall behind with their work and do less well in exams.
- Good attendance also shows potential employers that a young person is reliable

Week	Fitzroy	Goddard	Pleydell	Winner of the week
09/06	89%	88%	87.9%	Fitzroy
16/06	88.8%	87.8%	87.7%	EVEN
23/06	88.2%	87.3%	87.4%	Pleydell
30/06	87.5%	86.8%	86.9%	Goddard

House Competition Overall Points 2022-23 per pupil



Top 3 ILEARN Groups





“Friends of Lawn Manor”

Your school needs you!

Want to make a difference in your child’s education?

Volunteering with our PTA allows you to contribute your skills and knowledge for the benefit of your child, their school, and the community.

Support Us, Support your Child, and Support your Community

For more information, please contact
Mr Langdown or Ms Young

rlangdown@lawnmanor.org
g or
cyoung@lawnmanor.org

WHAT ABOUT PARENTS...



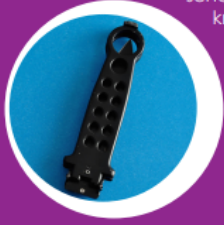
Parents can sometimes be held responsible if their children get in trouble with the police. If children are repeatedly in trouble and parents don't take reasonable steps to control their behaviour the parents could be:

- asked to attend a parenting programme
- asked to sign a Parenting Contract
- given a Parenting Order by a court

This is to support parents in stopping their children from getting in trouble again. Usually they are voluntary, but sometimes it is made more formal by a court.

DID YOU KNOW...

- Police can stop and search someone they think is carrying a knife or weapon.
- Police can come into schools and search for knives if they think the law is being broken.
- Head teachers have the power to search pupils for weapons in line with the Violent Crime Reduction Act 2006.



FOR MORE INFORMATION AND SUPPORT...



Visit

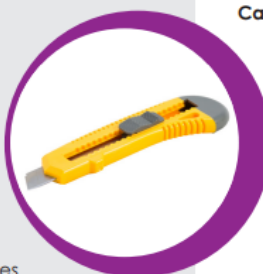
- <https://www.wiltshire.police.uk> – search offensive weapons
- <https://www.knifefree.co.uk>
- <http://noknivesbetterlives.com>

Call

- Childline on 0800 1111
- Victim support 0808 16 89 111

Report an incident or share information about knife crime

- Call Wiltshire Police on 101 or in an emergency 999
- Report crime anonymously and speak to someone in confidence.
 - Call Crimestoppers charity anonymously on 0800 555 111 or
 - if you are under the age of 18 report anonymously using <https://www.fearless.org/en/give-info>



KNIFE CRIME

Everyone has the right to live a life free from fear and violence.

We all have a duty and responsibility to keep each other safe from violence, and expect that our friends, family and children won't be carrying weapons.

Any incident where a knife or weapon has been carried or used with the intention to harm is a concern to us and police will investigate.

Knives are an everyday object but used for the wrong reasons they can be life threatening.

Most young people and adults don't carry a knife or weapon; it is not a normal thing to do.

A small number of people do find themselves involved in knife crime but despite these numbers being small, the effects of knife crime can reach a lot of different people. Innocent bystanders can get caught in the middle of other people's disputes and suffer trauma, serious injuries or worse. A wound in the arm or the leg can still be life threatening.

If you carry a knife it doesn't just affect you it will affect your family and friends. It will affect your parents or children, especially if you were to go to prison, or worse killed.



Carrying a knife is illegal in the UK and the consequences are tough. If you're found with a knife in your possession even if it is not yours, the Police and the courts will take firm action. Possession of a knife can carry a prison sentence of up to four years, even if it's not used.

If you carry a knife you are more likely to be injured. You are safer not carrying a knife.

THE LEGAL BIT...

- It is illegal to carry a knife, blade / sharp point or offensive weapon in a public place. You can be arrested for this.
- If someone is injured or killed by a knife in your presence, even if you are not the one using the weapon, you too could be prosecuted and sent to prison for murder in what is referred to as 'joint enterprise'.
- It's illegal for a shop to sell any kind of knife to someone under 18. This includes kitchen knives and even cutlery.



- It's illegal for shops to sell imitation guns or air weapons to anyone under 18-years-old, or to sell realistic imitation guns to anyone. It is also an offence to buy imitation guns.



NO KNIFE SAFER LIFE



Everyone has the right to live a life free from fear and violence.

- Some knives are illegal for anyone to buy:

- Flick knives - also called 'switchblades' or 'automatic knives'
- Butterfly knives
- Disguised knives - in which the blade is hidden in something like a belt buckle or fake mobile phone.



These are all categorised as offensive weapons ("any article made or adapted for use to cause injury to a person, or intended by the person having it with him for such use") and are completely banned.

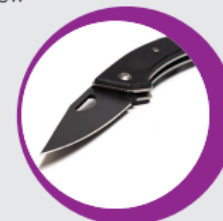
AGE OF CRIMINAL RESPONSIBILITY...

In England and Wales, the age when you are criminally responsible for your actions is 10 years old. Children between 10 and 17 can be arrested and taken to court if they commit a crime.

Children under 10 who break the law are treated differently to adults or youths under 18 who commit a criminal offence. Children under 10 cannot be charged with committing a criminal offence. However, they can be given a:

- Local Child Curfew
- Child Safety Order.

Children under 10 who break the law regularly can sometimes be taken into care, or their parents could be held responsible.



Swindon Town Warm Hub

Debbie Bunce
C/O Swindon Town Football Club
County Road
Swindon
SN1 2ED
swindontownwarmhub@gmail.com
WhatsApp - (07810298401)

15/03/2023

Dear Resident,

I am writing to let you know about a new community hub that we have created at Swindon Town Football Club.

We have opened this hub to enable people to pop in for toast and a cuppa in the morning, we open 8:30 - 10, or if you would rather some lunch and a cuppa from 12 - 2.

Everything food and drink wise at the hub has been donated and is free, you can come along, have something and chat with our volunteers or you can just enjoy your food and drink on your own table, the choice is completely yours.

At the moment, we offer toast for breakfast, white or brown and assorted spreads, jams, peanut butter and marmalade. For lunch we have various pot noodles, pasta pots, naked noodle pots and cuppa soups. There are also biscuits and chocolate bars available. Once we get the hub established and we know the demand we will look to expand the foods offered.

We open Monday, Tuesday, Thursday, and Friday unless there is a STFC home game in which case we will be shut that day.

I look forward to seeing you in the hub soon,
Debs



Lawn Manor Academy, Salcombe Grove, Swindon SN3 1ER
Call 01793 487286 | Visit lawnmanor.org |  @lawn_manor

lawnmanor.org